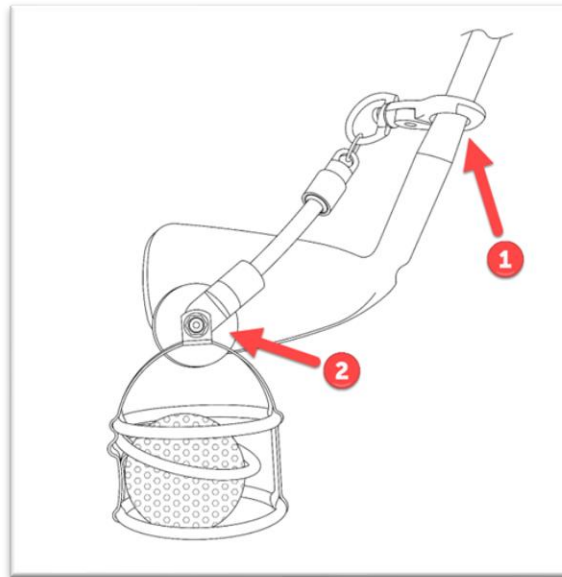


Instructions for Using ClubScoop

Below are recommended instructions for using ClubScoop. However, usage is quite flexible and after a few uses you may develop your own techniques.

Attaching ClubScoop to your Club:

We recommend that you use your longest iron to attach ClubScoop. The image below shows attachment to the clubface but the ClubScoop can also be attached to the back of the clubhead.



1. Using the trigger clip, attach the safety tether to the shaft of your golf club and allow ClubScoop to hang down naturally.
2. Snap ClubScoop's circular magnet to the face or back of your club. Position the magnet with a slight overhang from the clubhead to allow for clearance when the ball is captured.

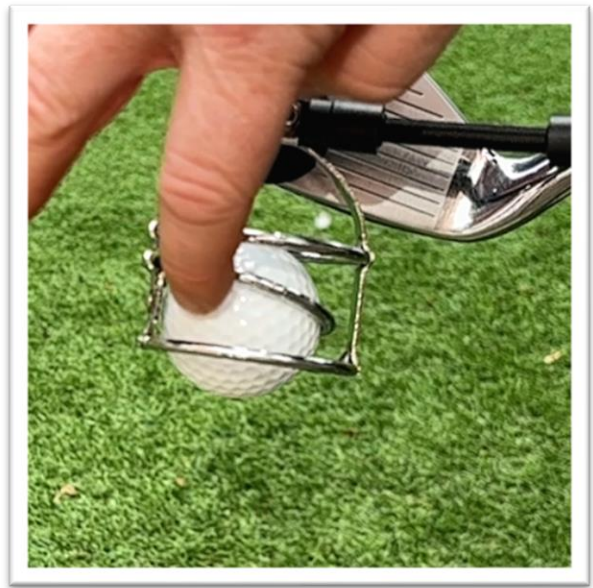
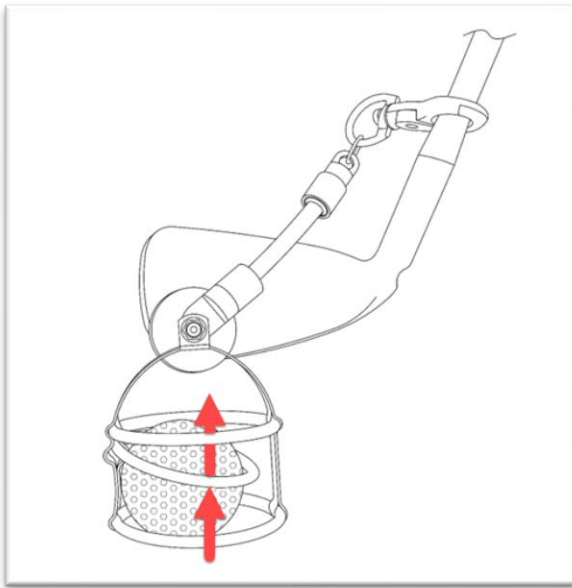
Retrieving the Ball



1. Approach your ball and extend your arm and club to position the retriever head over the top of the ball.
2. Lower ClubScoop straight down over the ball - this direct downward angle gives the best capture results, though other angles will also work depending on the situation.
3. Lift smoothly to capture the ball securely. You do not need to use force or pressure.

Removing the Ball from the Retriever Head

1. To remove the golf ball from the retriever, simply lift the retaining ring upwards with your finger or thumb



2. The ball will then drop out of the retriever head, onto the ground, or straight into your hand.

Removing and Storing ClubScoop

1. Unclip the safety tether from your shaft using the trigger clip.
2. Using your hand and fingers, twist the retriever head away from the club to disengage the magnet. There are several different ways to do this - find one that suits you.
3. For storage, clip ClubScoop to your bag or trolley using the safety tether and clip. **TIP:** for more compact storage, loop the safety tether around your towel/accessory hook and attach the clip to the retriever head (see image below).



4. ClubScoop can also be stored in a pocket of your golf bag.